



# USB Interface Converter Driver Installation Manual

Version: 02

Issue Date: 2018-11-29

---

**Copyright © 2018 3onedata Co., Ltd. All rights reserved.**

For this manual, all rights reserved by 3onedata Co., Ltd. No company or individual is allowed to duplicate or translate this manual in any forms without written permission issued by 3onedata Co., Ltd.

### **Trademark statement**

**3onedata**, **3onedata**<sup>®</sup> and  **3One data**<sup>®</sup> is the registered trademark owned by 3onedata Co., Ltd. And other trademarks mentioned in this manual belong to their corresponding companies.

### **Conventions Used in the Manual**

Technical or printing errors might exist in the product or the instruction manual; therefore, 3onedata Co., Ltd. reserves the right to change the manual entirely or partially with no advance notice required. 3onedata provides this document as is, without warranty of any kind, either expressed or implied, including, but not limited to, its particular purpose. Due to the improvement of the management software, the version of software that you are using might not be the latest or the perfect version. The manual is only for your reference, and please contact us if you have any questions.

# 3onedata

Make network communication more reliable



Please scan our QR code for more details



Embedded Industrial Ethernet Switch Modules  
Embedded Serial Device Server Modules



Industry-specialized Products  
(Rail Transit, Power, Smart City, Pipe Gallery...)



Honor · Quality · Service



Layer 2 (Unmanaged) Managed Industrial Ethernet Switch  
Layer 3 Managed Industrial Ethernet Switch  
Industrial PoE Switch



BlueEyes pro

BlueEyes Pro Management Software  
VSP Virtual Serial Port Management Software  
SNMP Management Software



Modbus Gateway  
Serial Device Server  
Media Converter  
CAN Device Server  
Interface Converter



Industrial Wireless Products

## 3onedata Co., Ltd.

Address: 3/B, Zone 1, Baiwangxin High Technology Industrial park, Nanshan District, Shenzhen, 518108  
Tel: +86-755-26702668  
E-mail: sales@3onedata.com  
Fax: +86-755-26703485  
Website: <http://www.3onedata.com>

---

# Preface

---

The driver installation manual has mainly introduced the USB interface converter:

- Driver installation
- Driver uninstallation

## Audience




This manual applies to the following engineers:


- Network administrator responsible for network configuration and maintenance

## Conventions

Format	Description
“ ”	Words with the symbol “” mean that those are interface words. Fox example “Port number”.
>	Multiple paths are separated by the symbol ‘>’.
Light blue Font	Click light blue font to hyperlink The font color is as follows: ‘Light Blue’.
About This Chapter	The section ‘about this chapter’ provides links to various sections of this chapter, as well as links to the Principles Operations Section of this chapter.

## Symbols

Format	Description
 Notice	Indicates a potentially hazardous situation which, if not avoided, could result in equipment damage, data loss, performance deterioration, or unanticipated results. NOTICE is used to address practices not related to personal injury.
 Warning	Indicates a potentially hazardous situation which, if not avoided, could result in death or serious injury.
 Note	Calls attention to important information, best practices and tips.

Format	Description
	NOTE is used to address information not related to personal injury, equipment damage, and environment deterioration.
 Key	The tips of configuration and operation.

## Revision History

Version No.	Date	Revision note
01	2018-08-10	Document adjustment
02	2018-11-29	Add support for win10

---

# Content

---

**PREFACE..... 1**

**CONTENT.....I**

**1 OPERATING SYSTEM REQUIREMENT ..... 1**

**2 DRIVER INSTALLATION ..... 2**

**3 DRIVER UNINSTALLATION ..... 6**

---

# 1 Operating System Requirement

---

## USB protocol

- Support USB2.0 and USB1.1

## Virtual serial port driver

Support the following operating systems:

- Windows 7, Windows Server 2008 R2 and Windows 8, 8.1, Windows Server 2012 R2, Windows Server 2016 and Windows 10
- Windows XP, Vista, Server 2003, Server 2008
- Windows 2000

Do not support the following operation systems:

- Windows 98
- Windows Me

## Dynamic library mode

Support the following dynamic libraries:

- Windows 7, Windows Server 2008 R2 and Windows 8, 8.1, Windows Server 2012 R2, Windows Server 2016 and Windows 10
- Windows XP, Vista, Server 2003, Server 2008
- Windows 2000

# 2 Driver Installation

## Acquire driver

Please install the corresponding driver depending on operating systems, as different operating systems correspond to different drivers. Their correspondences are displayed in the table below.

Operating system	Driver
Windows 7 Windows Server 2008 R2 Windows 8, 8.1 Windows server 2012 R2 Windows Server 2016 Windows 10	CDM21228_Setup.exe
Windows XP Vista Server 2003 Server 2008	CDM20824_Setup.exe
Windows 2000	CDM20600_Setup.exe

## Installation steps



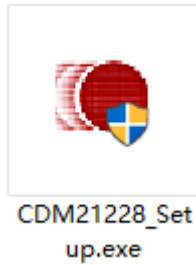
Note

Please copy the driver from the device accessory CD to the mainframe computer before installation; if the driver is lost or needs to be updated, please visit the company web for the latest driver or contact related technicians.

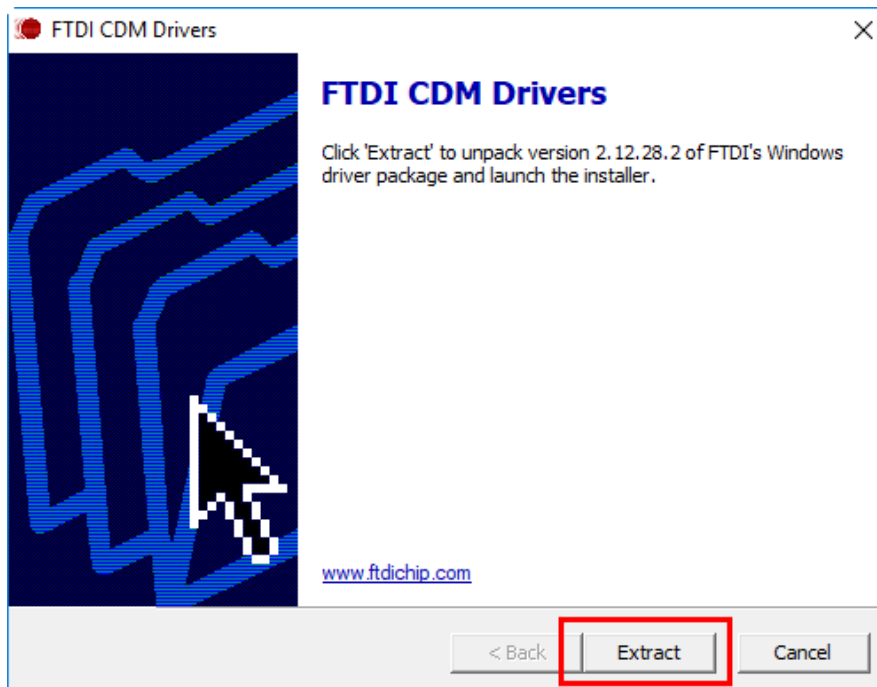


Here we install the driver in Windows10 64-bit operating system by taking USB232/485/422 device as example.

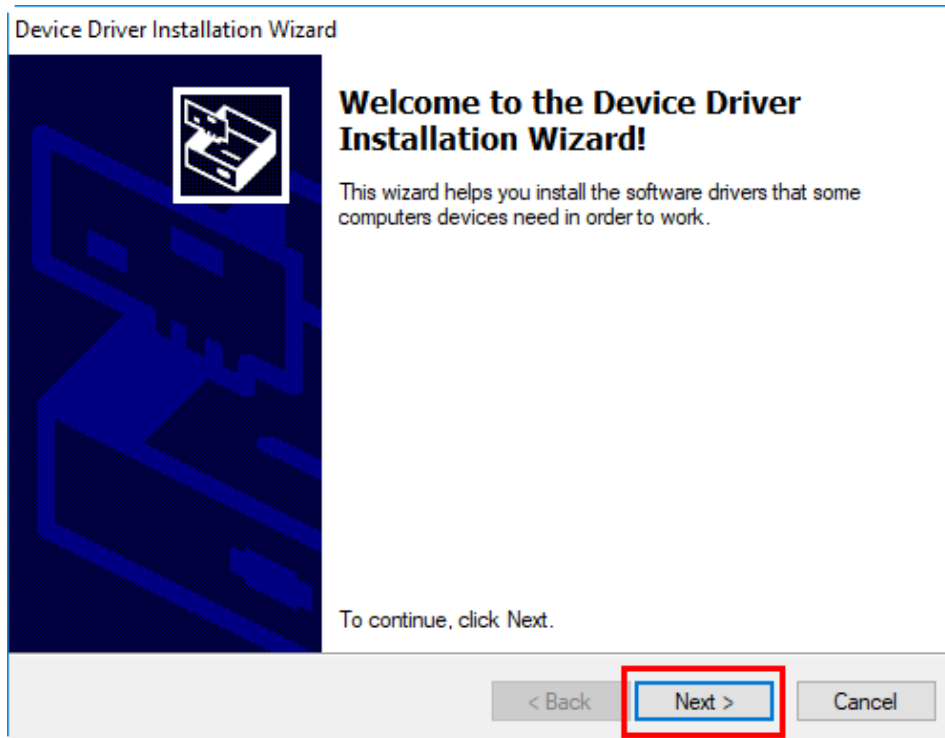
**Step 1** Double-click to open “Setup.exe” installation program;



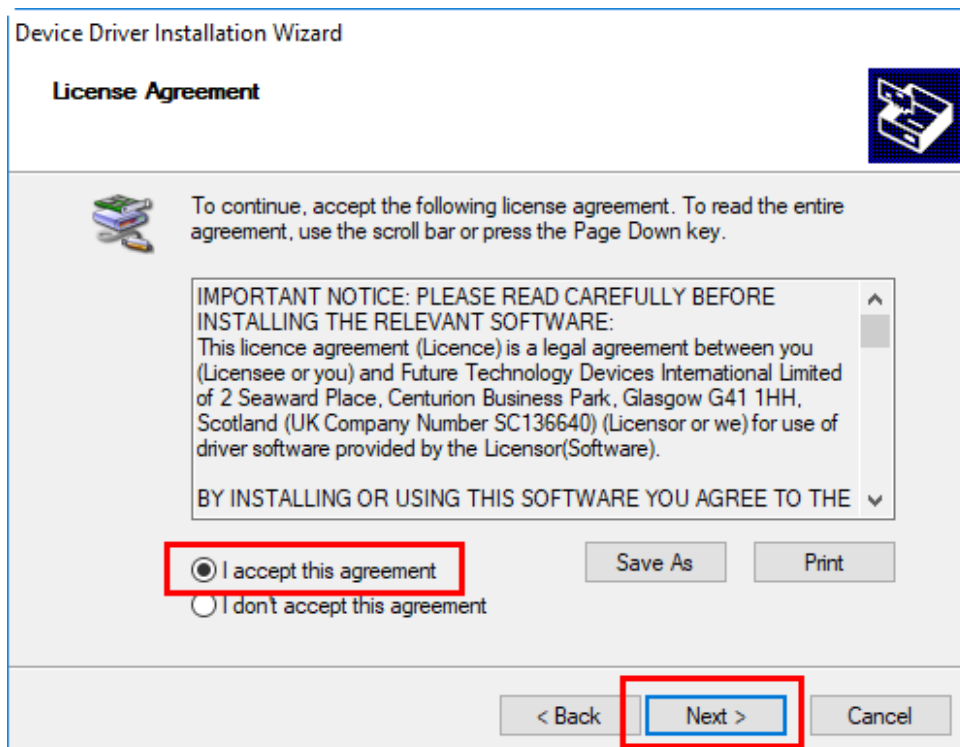
**Step 2** Click “Extract” button;



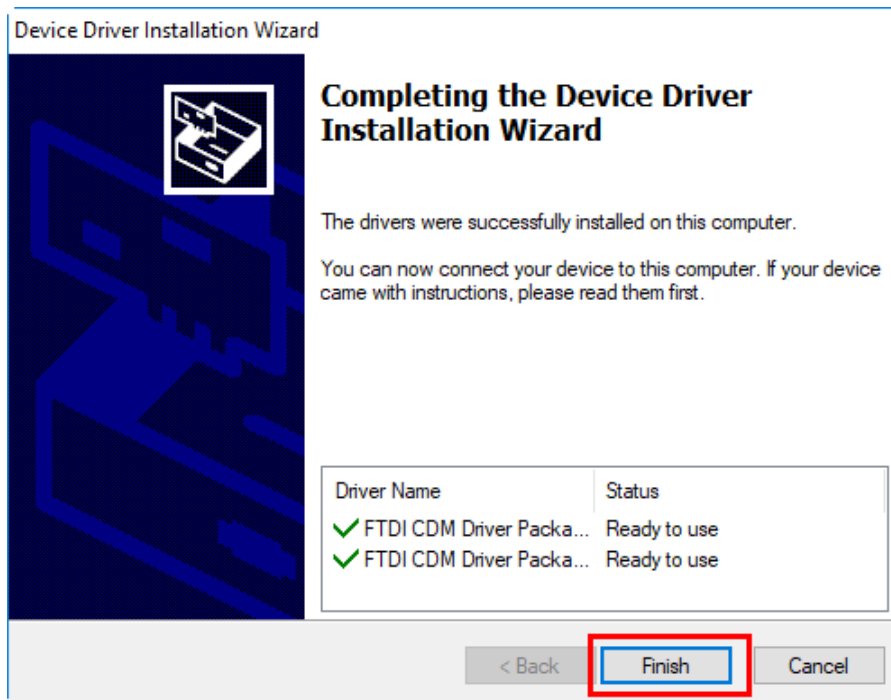
**Step 3** Click “Next” on the device driver installation wizard interface;



**Step 4** Check “I accept this agreement” and click “Next”;



**Step 5** Click “Finish” button;



**Step 6** End.

# 3 Driver Uninstallation

---

Here we uninstall device and its driver in Windows10 64-bit operating system by taking USB232/485/422 device as example.

Uninstallation steps are shown as below.



One serial port can be uninstalled at a time. Multiple uninstallations are needed if there are multiple serial ports.

---

**Step 1** Right-click the “Computer” icon of the PC and choose “Management”;

**Step 2** Choose “Computer Management (Local) > Performance > Device Manager” in the pop-up “Computer Management” windows.

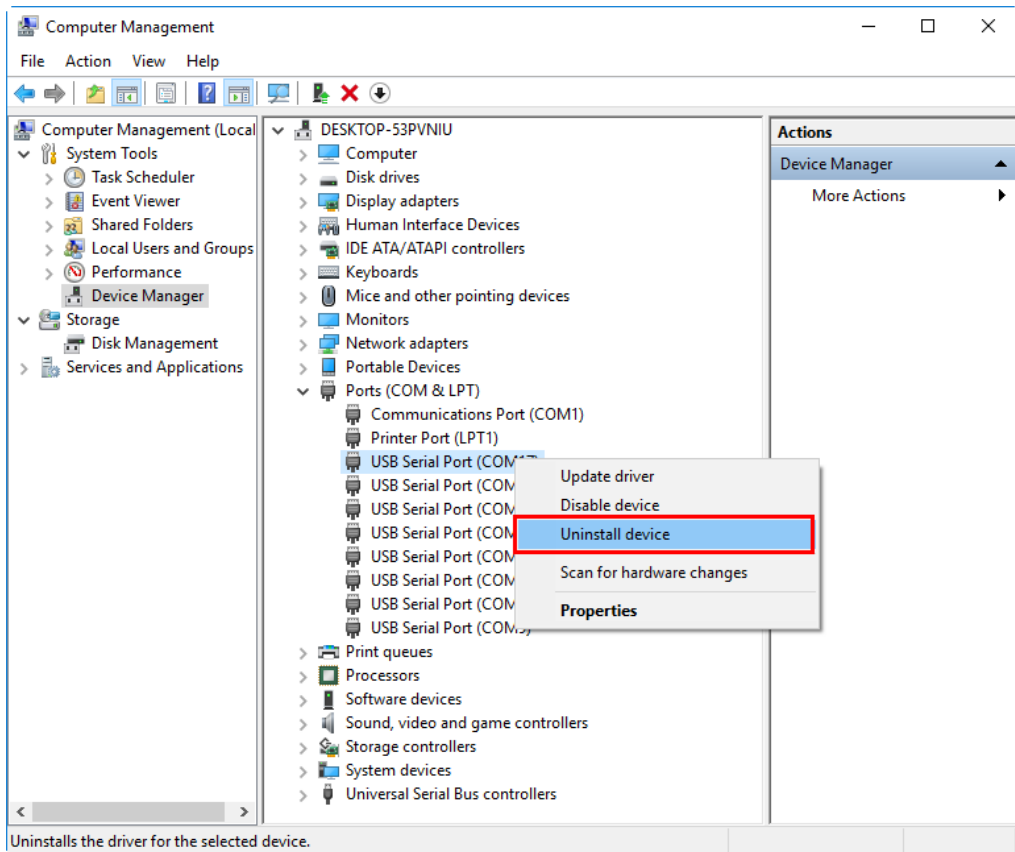
**Step 3** Uninstall connected device:

1. Click “Port (COM and LPT)” expansion icon;
2. Right-click “USB Serial Port (COM17)”;

Notes:

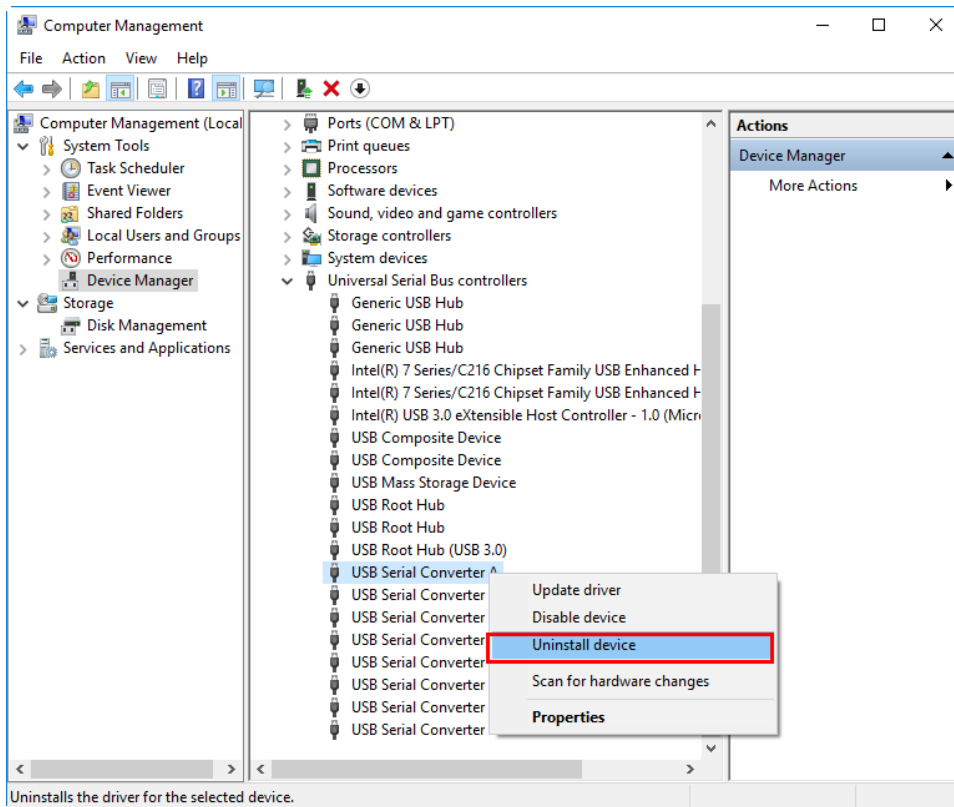
The displayed serial port numbers are different according to the situation of computer serial port occupation. The serial port to be uninstalled could be identified via plugging the device.

3. Click “Uninstall device”;

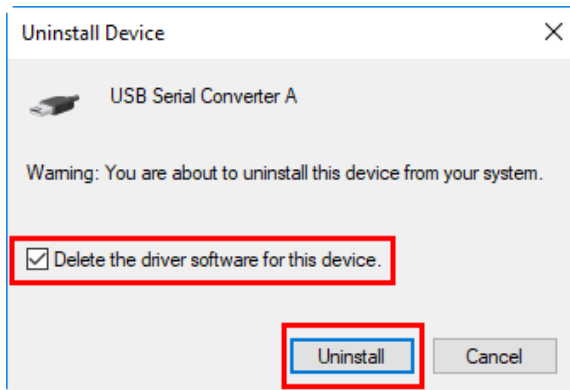


**Step 4** Uninstall driver:

1. Click "Universal Serial Bus controllers" expansion icon;
2. Right-click "USB Serial Converter A";
3. Click "Uninstall device";



4. Check “Delete the driver software for this device” in the window of affirming the uninstallation of the device.



5. Click “Uninstall” button;

**Step 5 End.**